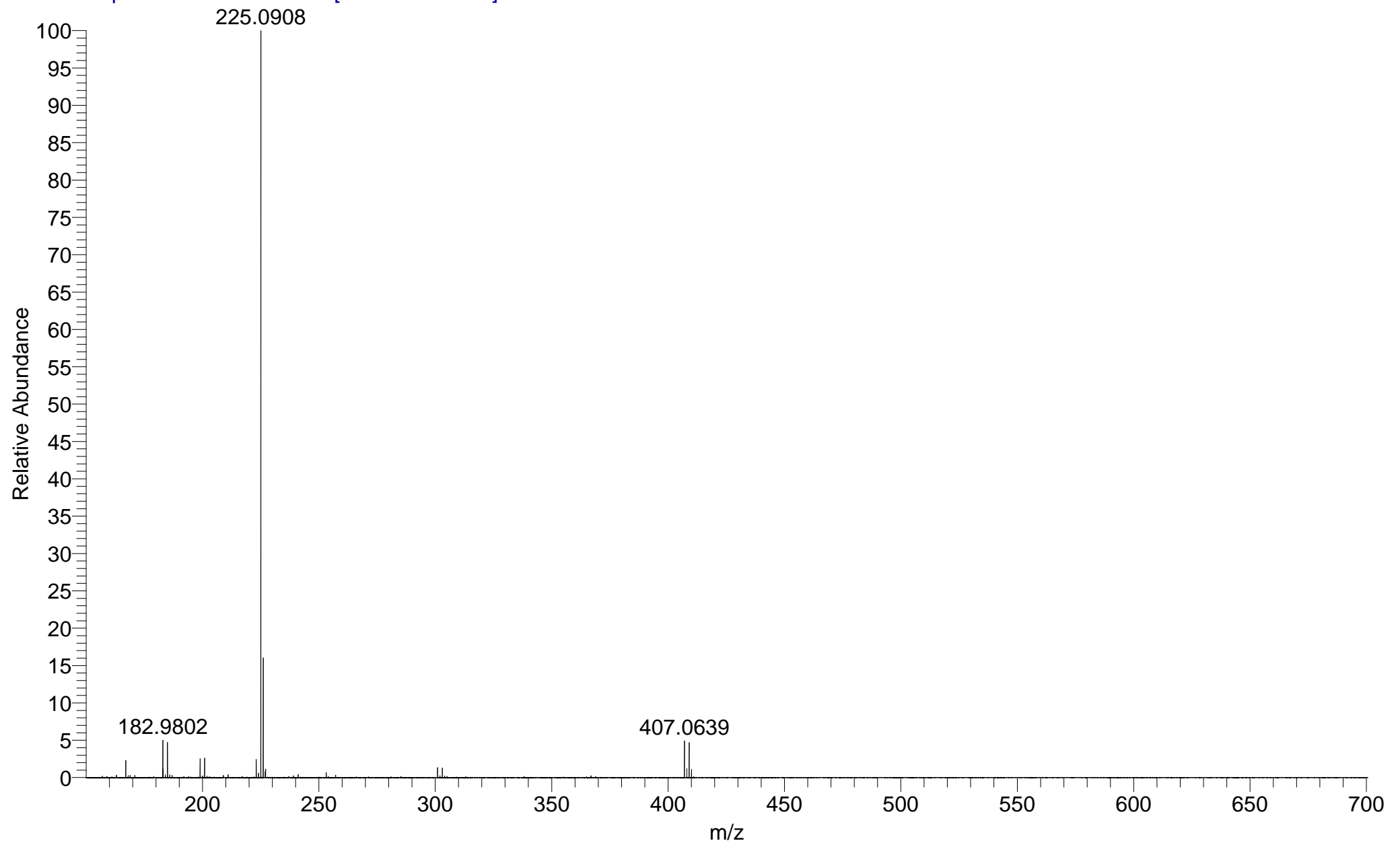
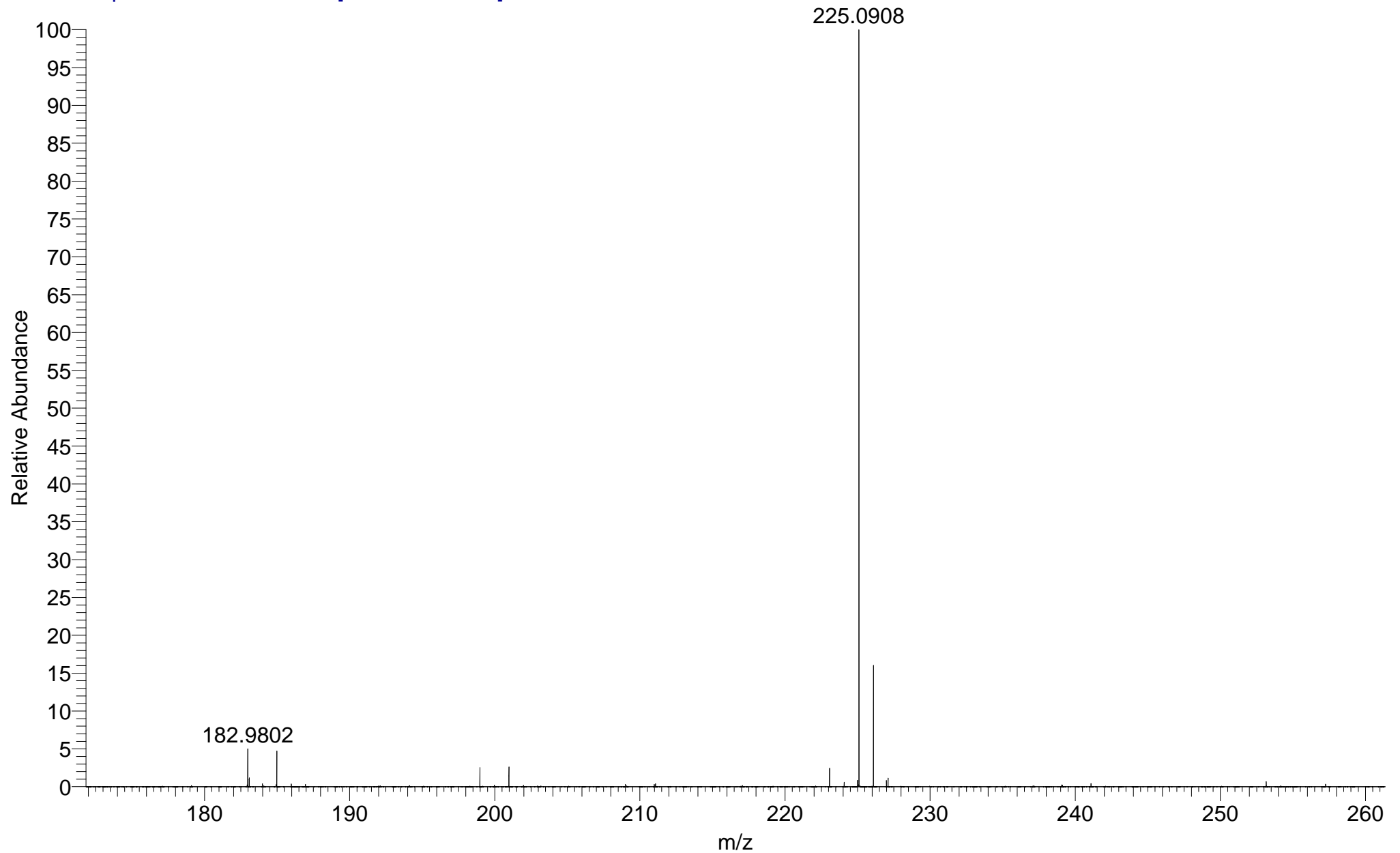


STASMI-RT3MV-PJ-A #11-18 RT: 0.58-0.96 AV: 8 NL: 1.21E8

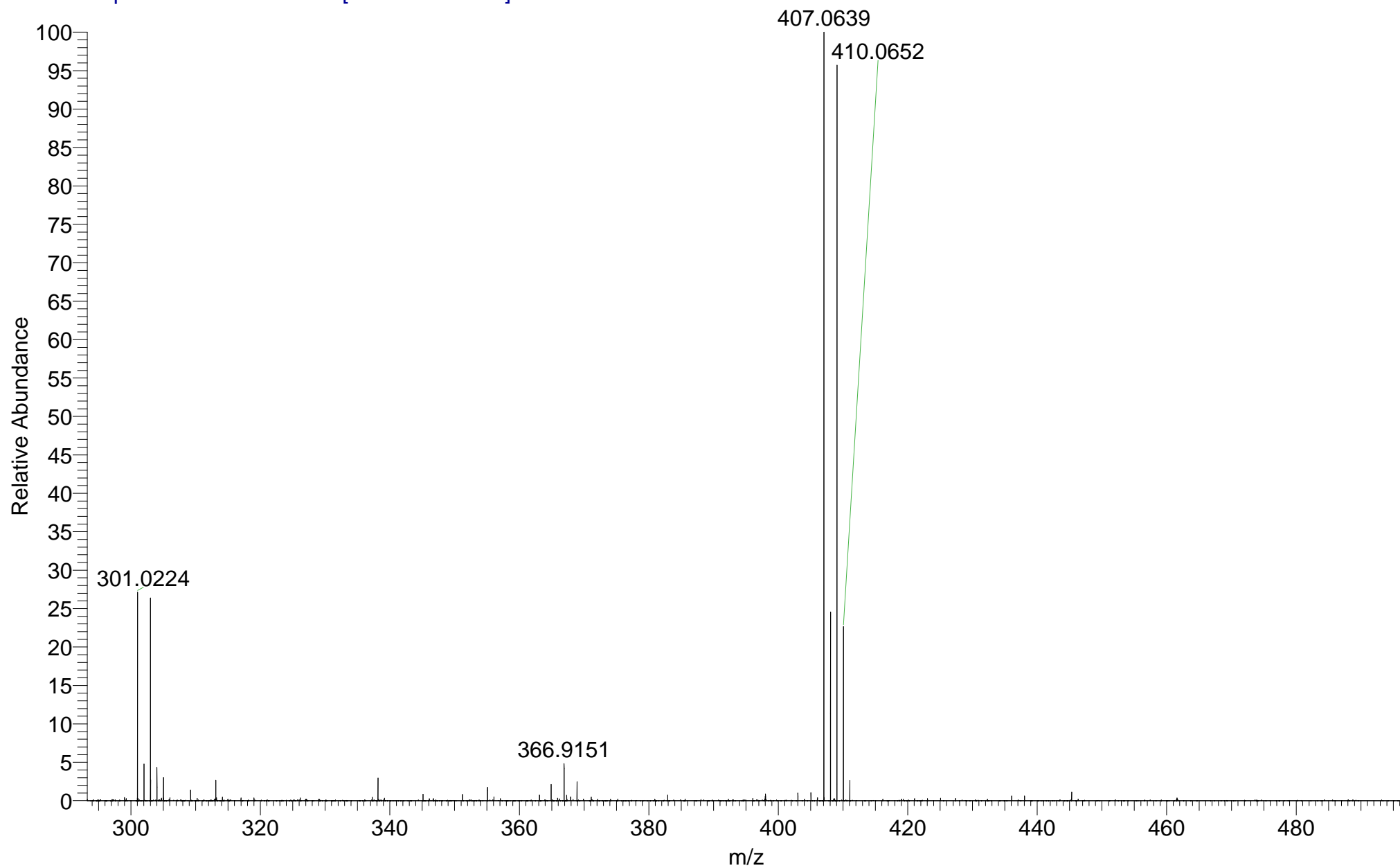
T: FTMS + p APCI corona Full ms [150.00-1200.00]

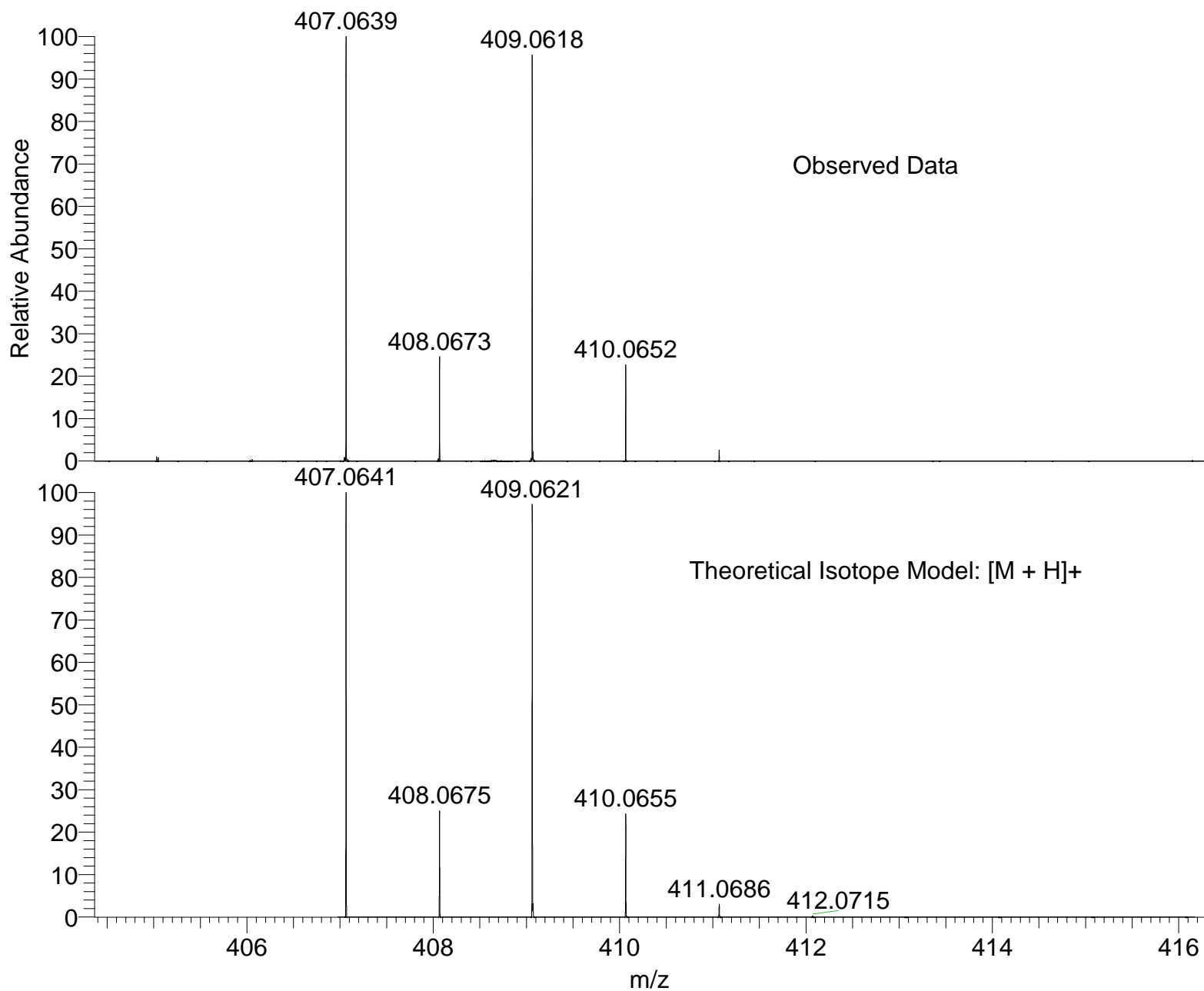


STASMI-RT3MV-PJ-A #11-18 RT: 0.58-0.96 AV: 8 NL: 1.21E8  
T: FTMS + p APCI corona Full ms [150.00-1200.00]



STASMI-RT3MV-PJ-A #11-18 RT: 0.58-0.96 AV: 8 NL: 5.92E6  
T: FTMS + p APCI corona Full ms [150.00-1200.00]





NL:  
5.92E6  
STASMI-RT3MV-PJ-A#11-18  
RT: 0.58-0.96 AV: 8 T: FTMS  
+ p APCI corona Full ms  
[150.00-1200.00]

NL:  
9.22E3  
C<sub>23</sub>H<sub>19</sub>BrO<sub>2</sub>H:  
C<sub>23</sub>H<sub>20</sub>Br<sub>1</sub>O<sub>2</sub>  
p (gss, s /p:40) Chrg 1  
R: 100000 Res .Pwr . @FWHM

Isotope: Min. .. Max.  
 14 N 0....15  
 16 O 0....15  
 12 C 0....70  
 1 H 0....80  
 23 Na 0....0  
 79 Br 0....1  
 Tolerance Window: +- 5.00 ppm  
 Db/Ring Equiv: -3.. 100  
 Fits: 50

N-Rule: Do not use  
 Charge: 1

Mass	Theoretical Mass	Delta [ppm]	RDB	Composition
407.0639	407.0641	-0.4	9.0	C <sub>6</sub> H <sub>9</sub> O <sub>9</sub> N <sub>13</sub>
	407.0641	-0.4	3.5	C <sub>7</sub> H <sub>15</sub> O <sub>14</sub> N <sub>6</sub>
	407.0641	-0.5	13.5	C <sub>23</sub> H <sub>20</sub> O <sub>2</sub> Br <sub>1</sub>
	407.0636	0.8	16.0	C <sub>21</sub> H <sub>13</sub> O <sub>8</sub> N <sub>1</sub>
	407.0636	0.8	21.5	C <sub>20</sub> H <sub>7</sub> O <sub>3</sub> N <sub>8</sub>
	407.0633	1.5	1.5	C <sub>7</sub> H <sub>20</sub> O <sub>7</sub> N <sub>8</sub> Br <sub>1</sub>
	407.0633	1.5	7.0	C <sub>6</sub> H <sub>14</sub> O <sub>2</sub> N <sub>15</sub> Br <sub>1</sub>
	407.0646	-1.8	6.5	C <sub>8</sub> H <sub>16</sub> O <sub>3</sub> N <sub>12</sub> Br <sub>1</sub>
	407.0646	-1.8	1.0	C <sub>9</sub> H <sub>22</sub> O <sub>8</sub> N <sub>5</sub> Br <sub>1</sub>
	407.0649	-2.5	21.0	C <sub>22</sub> H <sub>9</sub> O <sub>4</sub> N <sub>5</sub>
	407.0628	2.8	14.0	C <sub>21</sub> H <sub>18</sub> O <sub>1</sub> N <sub>3</sub> Br <sub>1</sub>
	407.0627	2.9	4.0	C <sub>5</sub> H <sub>13</sub> O <sub>13</sub> N <sub>9</sub>
	407.0654	-3.7	8.5	C <sub>8</sub> H <sub>11</sub> O <sub>10</sub> N <sub>10</sub>
	407.0654	-3.7	3.0	C <sub>9</sub> H <sub>17</sub> O <sub>15</sub> N <sub>3</sub>
	407.0622	4.1	16.5	C <sub>19</sub> H <sub>11</sub> O <sub>7</sub> N <sub>4</sub>
	407.0622	4.1	22.0	C <sub>18</sub> H <sub>5</sub> O <sub>2</sub> N <sub>11</sub>
	407.0619	4.8	2.0	C <sub>5</sub> H <sub>18</sub> O <sub>6</sub> N <sub>11</sub> Br <sub>1</sub>